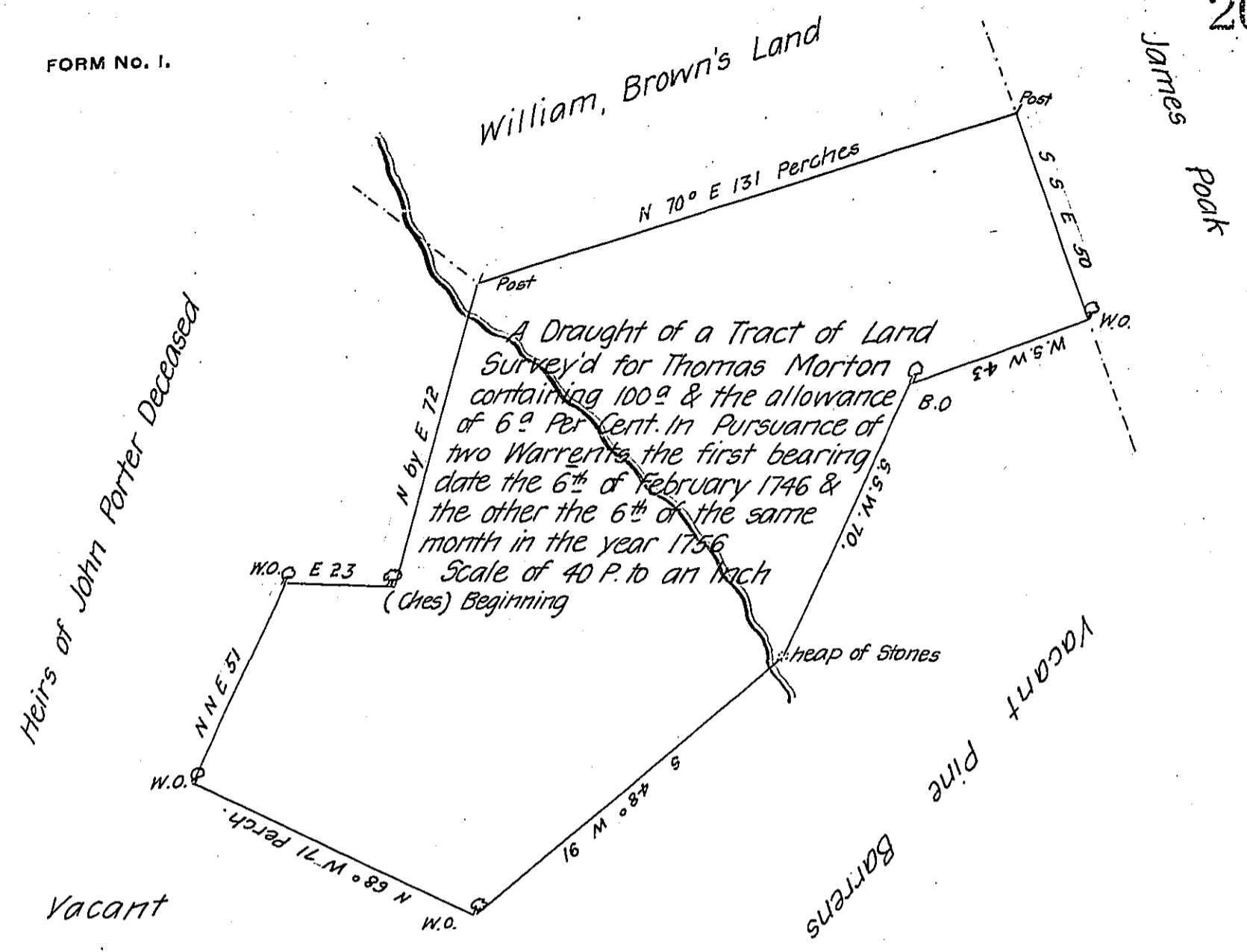


FORM No. 1.



Situate on a Branch of Octoraro Creek in West Nottingham Township. the survey compleated the 18th of the 2nd mo. 1756

Certify'd By

Geo. Churchman Dep. Sur^r

IN TESTIMONY that the above is a copy of the original remaining on file in the Department of Internal Affairs of Pennsylvania, made conformably to an Act of Assembly approved the 16th day of February, 1833, I have hereunto set my Hand and caused the Seal of said Department to be affixed at Harrisburg, this eighth day of March 1906

Geo. D. ...
Secretary of Internal Affairs.